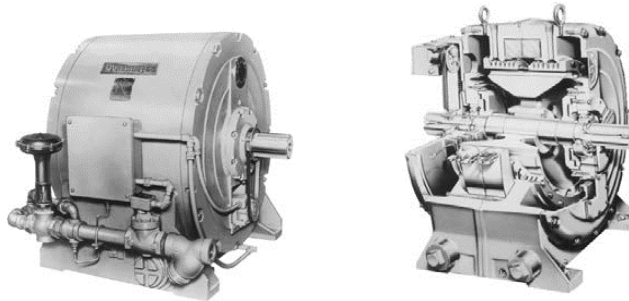


## SPECIALTY PRODUCTS

### LIQUID-COOLED COUPLINGS WC-215 through WC-2253 200 to 2,000 HP



#### Description

Dynamatic heavy-duty couplings provide stepless adjustable speed with full load torque, continuously available, over a wide speed range. The basic coupling is horizontal, foot mounted, stationary field, Water-Cooled, equipped with externally lubricated anti-friction bearings and automatic water piping. These ruggedly constructed drives require no brushes, slip rings or commutators.

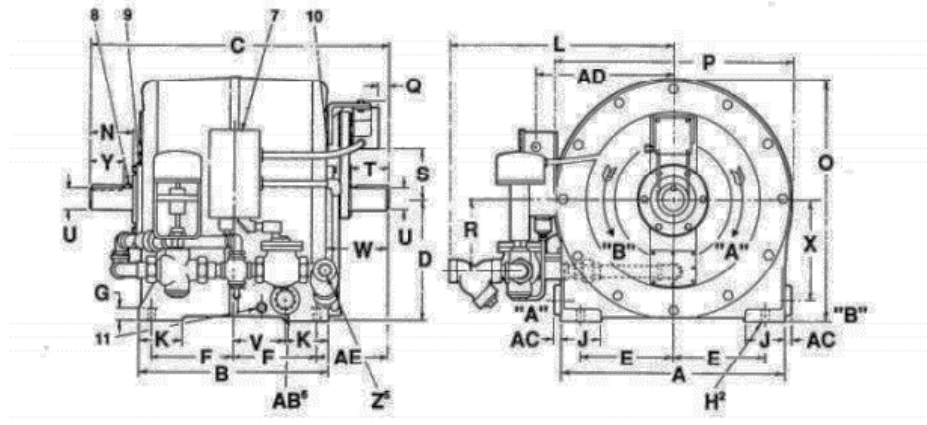
Model	Torque at Slip RPM (Pounds-Feet)						Therm. Cap. (HP)	Normal Max. Speed RPM	Control Size	Cooling Water GPM	
	40	50	60	75	1150	1750				Bypass	Max
215	310	380	435	500	990	1000	300	1800	3	-	30
2163	490	580	660	780	1590	1525	450	1800	4	3	45
2164	650	750	840	975	2375	2325					
2165	750	875	1020	1200	2350	1975					
2172	1025	1200	232	1520	2990	2950	600	1800	3	5	60
2173	1250	1475	1650	1925	2880	2300					
2192	1525	1760	1980	2275	4250	4150	800	1800	4	6	80
2193	1750	2030	2300	2700	3800	3150					
2212	2450	2650	2800	3100	5100	4600	1000	1800	7	9	100
2213	2800	3200	3575	4050	4900	3775					
2232	3450	3950	4350	4900	7300	6300	1250	1800	8	10	125
2233	4500	5150	5800	6500	8100	6800					
2252	5250	6000	6600	7400	9500	8500	1800	1200	8	10	180
2253	6400	7500	8400	9200	10800	9400					

#### Features & Benefits

- Separate motor can operate at full voltage; no need for step down transformers.
- Totally enclosed drive has no loud wind noise from internal cooling fans.
- Designed to provide wide stepless ranges without blowers.
- Design allows torque to be transmitted by electromagnetic field without friction or wear.
- The only physical connections are four industrial bearings that need only occasional lubrication.
- Reliable operation - Horsepower ratings are based on continuous duty 24 hours a day, 7 days a week, using conditions of 90°F inlet water.
- Availability of replacement parts and service for many years of reliable operation is assured by our distribution network.

**SPECIALTY PRODUCTS**  
**LIQUID-COOLED COUPLINGS**

**Outline Drawings WC 215-2213**



**Dimensions in inches**

Model WCS	A	B	C	D <sup>1</sup>	E	F	G	H <sup>2</sup>	J	K	L	N	O	P	Q
215	25.00	17.38	28.00	13.50	10.50	7.44	1.12	1.00	4.00	4.75	22.50	4.25	26.18	25.38	--
2163 2164 2165	25.00	20.00	31.25	13.50	10.50	8.75	1.12	1.00	4.00	4.75	23.06	5.06	26.18	26.75	.025
2172 2173	28.00	21.50	33.00	14.50	12.00	9.50	1.25	1.12	4.00	4.50	30.00	5.38	29.32	29.56	.026
2192 2193	30.00	22.00	34.75	17.25	13.00	9.50	1.25	1.12	4.00	5.00	31.50	5.50	34.00	33.44	1.00
2212 2213	32.00	27.12	40.88	17.25	14.00	12.06	1.25	1.12	4.00	5.00	34.12	6.06	34.25	34.06	1.50

Model WCS	R	S	Shaft Extension				V	W	X	Z <sup>5</sup>	AB <sup>6</sup>	AC	AD	AE
			T <sup>3</sup>	Y <sup>3</sup>	U <sup>4</sup>	Keyway								
215	7.62	6.25	4.25	3.50	2.00	.50 x .25	3.00	6.75	10.62	1.00	2.50	1.00	--	7.06
2163 2164 2165	7.62	6.25	4.50	3.75	2.25	.50 x .25	3.75	3.50	10.68	1.00	3.00	1.56	--	7.25
2172 2173	8.50	7.82	4.75	4.75	3.00	.75 x .38	5.88	2.25	11.62	1.25	3.00	1.56	17.25	7.25
2192 2193	10.00	8.75	5.00	5.00	3.375	.88 x .44	6.00	3.00	14.12	1.50	3.50	1.62	19.00	8.25
2212 2213	10.00	8.50	5.50	5.50	3.75	.88 x .44	8.50	6.50	14.12	2.00	3.50	1.62	19.38	8.75

**Notes:**

- <sup>1</sup> Dimensions will never be exceeded. When exact dimensions are needed, liners up to 0.5 inch may be required.
- <sup>2</sup> Four mounting holes "H" diameter
- <sup>3</sup> Maximum usable shaft length
- <sup>4</sup> Shaft diameter tolerance:  $\frac{+0.000}{-0.001}$
- <sup>5</sup> Water inlet "Z" pipe tap
- <sup>6</sup> Water discharge "AB" pipe tap
- <sup>7</sup> (in graphic) Water piping, clutch field and tachometer generated leads junction box. Furnished opposite standard on request.
- <sup>8</sup> (in graphic) Grease inlet for center support bearing. Grease fitting can be used in end of input shaft if desired.
- <sup>9</sup> (in graphic) Grease inlet for input shaft bearing
- <sup>10</sup> (in graphic) Grease inlet for output and drum support bearings
- <sup>11</sup> (in graphic) Immersion bulb (1" pipe tap) must be located in water discharge side of machine.